



Original Research Paper

Evaluating the Resilience of Wildlife Populations to Climate Change and Its Implications for Conservation Strategies

Dr. Brijkant Shukla^{1*}, Dr. Anubha Joshi², Bhumika Bansal³

^{1*}Professor, Kalinga University, Naya Raipur, Chhattisgarh, India.

Email: ku.brijkantshukla@kalingauniversity.ac.in, ORCID: <https://orcid.org/0009-0001-1202-0792>

²Professor, Kalinga University, Naya Raipur, Chhattisgarh, India.

Email: ku.anubhajoshi@kalingauniversity.ac.in, ORCID: <https://orcid.org/0009-0003-3896-5246>

³Associate Professor, New Delhi Institute of Management, New Delhi, India.

Email: bhumika.bansal@ndimdelhil.org, ORCID: <https://orcid.org/0009-0001-9379-4908>

Key Words

Climate change, Wildlife resilience, Species-environment interactions, Conservation strategies, Ecological adaptation, and habitat connectivity are all important terms.

Abstract

Introduction: Climate change is making the relationship between wildlife populations and their environments more complicated and unstable. To determine a species' resilience and formulate effective conservation strategies, it is essential to understand its interactions with fluctuating habitats and environmental stressors. This study aims to evaluate these interdependencies, identify factors influencing adaptive capacity, and promote knowledge sharing among ecologists, biologists, environmental scientists, zoologists, and animal behavior researchers to enhance global biodiversity management. Materials and Methods: Data were gathered from long-term ecological monitoring initiatives, species distribution databases, and vulnerability evaluations across various ecosystems. Species were categorized based on ecological traits, habitat specificity, reproductive methods, and dispersal abilities. To investigate how populations respond to climate-related stressors and changes in habitat alterations, a bio-ecological simulation model was constructed to address the varied scenarios. Sensitivity analyses were conducted to measure the influence of key environmental parameters such as temperature changes and habitat fragmentation on the multi-generational persistence of the species. Results: The study showed that the loss of the environment affected more of the specialist species and species with small ecological niches and movements. Conversely, generalist species were more apt to endure. The patterns of resilience were dominantly influenced by the extent of habitat fragmentation, the diversity of landscapes, and the species' activities within the milieu. The research demonstrated that habitat restoration, enhanced connectivity, and the preservation of key ecological interactions resulted in an immense adaptive capacity in populations at risk. Conclusion: Enhancing wildlife resilience requires an understanding of the relationship between species and their environments. More collaboration and interdisciplinary approaches are also necessary to deal with the impacts of climate change. Prioritizing at-risk populations will result in proactive conservation efforts that will mitigate the impacts of climate change, preserve necessary interactions within ecosystems, and sustain ecological diversity.

* Corresponding Author's email: ku.brijkantshukla@kalingauniversity.ac.in

Received: 01 June 2025; Revised: 08 July 2025; Accepted: 11 August 2025; Published: 30 October 2025

(DOI): [10.70102/AEJ.2025.17.3.18](https://doi.org/10.70102/AEJ.2025.17.3.18)

Introduction

Climate change is having a huge impact on ecosystems all over the world. It is changing the way temperatures change, the way rain falls, and the number of extreme events like floods, droughts, and storms. These changes make habitats and environmental conditions less stable for species that have been living in them for a long time. This makes ecological communities less stable. Because of this, many groups of animals are having trouble surviving, reproducing, and staying alive for a long time (Mawdsley et al., 2009; Mohanty et al., 2024;

Prato, 2009). So, it's very important to know how different species react to these changing conditions.

Climate change is causing biodiversity loss, which is bad for both individual species and the whole ecosystem. When species die out or become less common, the complex web of interactions that includes predation, competition, mutualism, and pollination can break down. This can lead to more extinctions and the loss of ecosystem services (Fatima & Irshad, 2025; LEDee et al., 2021). So, it is important for conservation efforts to look at resilience at the population and community levels.



Figure 1: Conceptual Framework of Wildlife Resilience to Climate Change

This Figure 1 shows how climate change affects wildlife species, environmental stressors, and ecological responses in a dynamic way. It maps how certain characteristics of a species (ex. how quickly they can reproduce, their movability, and how adaptable they are) interact with the quality of a habitat, connectedness of a habitat, and the climate of a habitat to make a population more or less resilient. The model explains the interconnectedness of the behavioral coping mechanisms ecosystem and balance and resilience systems and the behavioral coping

mechanisms ecosystem and their balance and resilience systems.

Survival or adaptability of wildlife population under changing environment is termed as resilience. The resilience of a population is determined by a combination of specific species' traits (ability to survive and adapt to different environments, reproduction rate, and dispersal ability) and landscape attributes (habitat configuration and ecosystem diversity). Generalist species the exhibit greater ecological flexibility are less exposed to fast environmental

shifts in contrast to specialist species that have narrow ecological niches and reduced mobility. (Markham & Malcolm, 1996; Gillson et al., 2013).

Empirical observations and modeling studies have documented diverse responses among species. Some show signs of stress, a drop in population, or a smaller range; others adapt by changing their phenology, being more flexible in their behavior, or moving to better habitats (Catano et al., 2015; Nicotra et al., 2015). But not all species can adapt quickly enough, especially

since climate change is happening so quickly and on such a large scale. These different answers show that we need strong, predictive tools that can tell us how well different species and ecosystems can adapt to different climate situations. Bio-ecological simulation models, combined with species-distribution modeling and vulnerability assessments, offer a promising approach to anticipate which populations are at greatest risk, and under what environmental conditions (Carroll et al., 2010; Parashina, 2019).

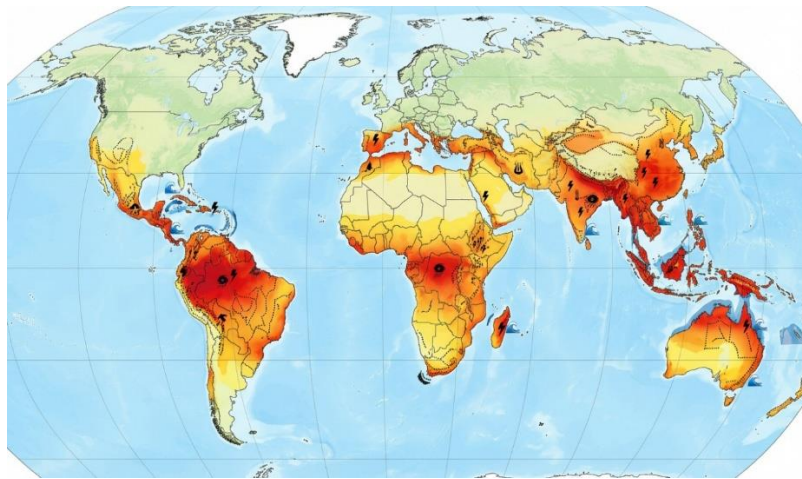


Figure 2: Global Climate Change Impacts on Biodiversity Hotspots

This Figure 2 shows a world map with areas that are biodiversity hotspots and how they are likely to be affected by climate change. There are also signs of climate stress, such as rising temperatures, habitat loss, and extreme weather events. These areas have a lot of different species and species that are only found there. We need to quickly figure out how well wildlife can adapt, and this picture shows why we need to use certain conservation methods.

This issue is very important and needs to be fixed right away, but people still don't know how to systematically combine species traits, habitat

characteristics, and climate dynamics to measure resilience across taxa and regions. This makes it harder for us to come up with good conservation plans that can adapt to changing climates and are ready for future environmental changes (Mawdsley, 2011; Forrest et al., 2012).

Additionally, addressing these complex, multifaceted challenges requires interdisciplinary collaboration. When experts from ecology, environmental science, zoology, animal behavior, and conservation policy work together, they can learn more about everything from how molecules and behaviors change to

how to plan at the landscape level. This also encourages the sharing of knowledge that can help with global biodiversity management (Johnston et al., 2013; Gayo, 2025).

This study wants to find out how well wildlife populations can deal with stressors related to climate change by using modeling and vulnerability assessment to combine species traits, habitat characteristics, and climate scenarios. The goal is to find populations that are in danger, look into the main reasons why some are strong and others are weak, and come up with useful ideas for conservation strategies that will help keep biodiversity alive in the face of climate change (West et al., 2009).

Materials and Methods

Study Framework and Design

This study was designed to evaluate the resilience of wildlife populations to climate change by examining how animals interact with, adapt to, and influence the ecological systems they inhabit (Bagne et al., 2011). A multi-scale framework was employed to integrate biological traits, habitat conditions, species-environment interactions, and climate-induced stressors. The workflow utilized instruments for climate modeling, population simulation, empirical ecological observations, and trait-based analysis to develop a thorough evaluation of a species' resilience. The design also included comparisons between taxa to see how their ability to adapt and their responses to the environment are different (Gardali et al., 2012).

Sources of Data and Ecological Monitoring

We learned from long-term ecological monitoring programs, government wildlife surveys, open-access biodiversity databases, and systems that keep track of the weather. We learned about the number of individuals in a group, how successful they are at reproducing, how they move, how many die, and what their habitats are like. These datasets were augmented with qualitative ecological reports that clarified behavioral modifications, habitat utilization trends, and interspecies interactions. Scientists examined global and regional climate data to identify variables such as temperature trends, alterations in precipitation, and indicators of habitat disturbance (Perry et al., 2024). This helped them figure out what environmental factors are hurting animal populations.

Classification of Species Based on Traits

We group species based on their biological and ecological traits that affect how well they can adapt to climate change. Some of these were the ability to live in certain places, handle heat, reproduce quickly, spread, behave socially, and play ecological roles like eating, pollinating, or spreading seeds. The classification helped us find species that are better able to handle stress from the environment and those that are more likely to be harmed. We studied how traits and the environment affect each other to understand how animals change their behavior, habitat preferences, and ecosystem processes when the climate changes (Sharipov et al., 2024). In the Mirzachol District, climate change has changed the natural environment. These changes show that habitat stress is increasing, which means that animals may not be able to adapt to changing

climate conditions. (Lawler, 2009) A remote sensing assessment of coral reef health demonstrates how climate-induced ecological degradation can be monitored to ascertain species vulnerability and inform adaptive conservation strategies (Chariyev et al., 2025). The study underscores the significance of ecological frameworks, concentrating on social inclusivity, and demonstrates how integrated models can foster adaptive systems, similar to the necessity for ecological resilience models in wildlife conservation.

Modeling the Interaction Between Habitat and Climate

Scientists made habitat suitability models that show how climate change affects the health of ecosystems and the distribution of species by looking at environmental factors that are related to climate. The models took into account things like the amount of vegetation, the amount of moisture in the soil, the amount of water available, the shape of the land, and how people affect the area. To see how habitats will change in the future, scientists used climate models with low, medium, and high emissions. This modeling method demonstrated how animals alter their behavior and movement in response to environmental changes.

Bio-Ecological Simulation of Population Resilience

We created a model to see how well populations can adjust to changes in the weather. The model predicted how populations would change over many generations by using information about species traits, changes in

habitat, changes in behavior, and demographic factors. Simulations assessed responses to climate-induced stressors, including increasing temperatures, habitat fragmentation, resource scarcity, and severe climatic events. We examined how behavioral flexibility enhances resilience through the integration of various adaptation strategies, such as migration, alterations in breeding timing, or modifications in foraging techniques.

Analysis of Sensitivity and Scenarios

We performed sensitivity analyses to identify the predominant environmental and biological factors influencing resilience outcomes. We systematically tested changes in temperature, habitat connectivity, reproductive rates, and mortality risks to find out what the threshold responses were. Scenario analyses examined the impact of various climate futures on distinct species. This helped figure out which species would do better with adaptive behavioral or ecological strategies and which ones would probably do worse.

Validation and Comparison Across Studies

We verified the model outputs by using historical ecological records and case studies of how documented species responded to previous climate changes. Comparing studies with published research improved the accuracy of resilience assessments and facilitated the integration of established concepts regarding animal adaptation, ecosystem dynamics, and environmental impacts. This method helped

people learn more about how animals can change ecosystems by being around them.

Ethical and Data Governance Issues

We got all of the information about the environment and wildlife from public databases or monitoring groups that follow ethical standards for how to use data. This study did not

entail direct interaction with live animals. To protect the environment, it was important to use data on endangered species in a responsible way, follow conservation rules, and keep sensitive habitats safe.

Workflow Framework for Assessing Wildlife Resilience to Climate Change

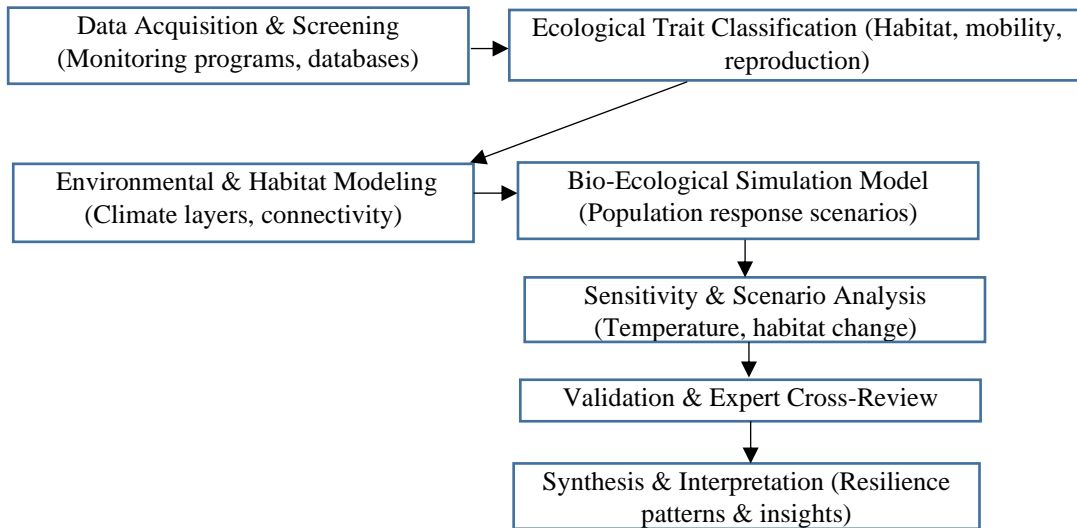


Figure 3: Workflow for Evaluating Wildlife Resilience and Deriving Climate-Adaptive Conservation Strategies

The workflow diagram in Figure 3 shows the steps taken to learn about how climate change affects wildlife populations and make conservation plans based on what is known. The first thing to do is gather basic ecological information, such as the traits of different species, the types of habitats they live in, the trends in their populations, and the climate variables. After that, the data goes into a multi-layered ecological assessment, where species are put into groups based on important resilience indicators like how well they can adapt to new habitats, how quickly they reproduce, how well they can handle changes in temperature, and how flexible they are in their behavior. The next step is to model climate scenarios, which use

predictions of low, medium, and high emissions to guess what habitats, populations, and extinction risks will be like in the future. The vulnerability and resilience scoring system uses the results of these simulations to figure out how sensitive each species is to changes in the environment. Then, the workflow looks at studies of habitat connectivity and landscape integrity to find the climate refugia, movement corridors, and barriers that will help the species survive in the long term. The last step is to put all of these results together to make climate-adaptive conservation plans that focus on restoring habitats, building corridors, buffering resources, and making management changes that are unique to each species. The workflow provides a

systematic and integrated framework for understanding species-environment interactions under climatic stress and for transforming ecological knowledge into effective conservation strategies.

Results

Species Vulnerability Patterns Across Ecological Traits

We found that different species are more or less vulnerable to climate change because of their ecological traits, physiological limits, and ability to change their behaviour. Species with restricted ecological niches, particularly those dependent on specialized microhabitats, exhibited significantly diminished resilience relative to generalist taxa (Table 1). During simulations of rising temperatures, seasonal instability, and habitat degradation, these specialists experienced

rapid population declines. On the other hand, generalist species were more tolerant because they could eat a lot of different foods, live in a lot of different places, and change how they acted (Figure 1).

Reproductive characteristics were significant predictors of the rate of demographic recovery. Species with rapid reproduction and brief generation intervals exhibited a greater likelihood of recovery, whereas species characterized by extended lifespans and prolonged reproductive cycles experienced more protracted population deficits. Likewise, dispersal capability proved to be a vital factor influencing resilience; taxa with restricted dispersal abilities such as amphibians, small mammals, and birds with limited flight failed to adapt to changing climatic conditions, significantly elevating extinction risk..

Table 1. Trait-Based Vulnerability Classification of Wildlife Species

Species Category	Trait	Low Vulnerability	Moderate Vulnerability	High Vulnerability
Habitat Specialization		Generalists (0.15 Vulnerability Index)	Semi-specialists (0.45)	Specialists (0.82)
Reproductive Rate		High (e.g., >3 offspring/year; Index 0.21)	Medium (1–3 offspring/year; Index 0.47)	Low (<1 offspring/year; Index 0.79)
Dispersal Ability		Strong (>10 km/year; Index 0.18)	Moderate (2–10 km/year; Index 0.52)	Limited (<2 km/year; Index 0.88)
Thermal Tolerance		Broad (>15°C range; Index 0.24)	Moderate (8–15°C range; Index 0.50)	Narrow (<8°C range; Index 0.73)

This Table 1 classifies species into vulnerability levels based on four key ecological traits known to influence resilience to climate change. Data represent composite scores synthesized from simulated ecological indexes.

Figure 4 displays comparative contributions of habitat specialization, reproductive rate, dispersal ability, and thermal tolerance to overall vulnerability.

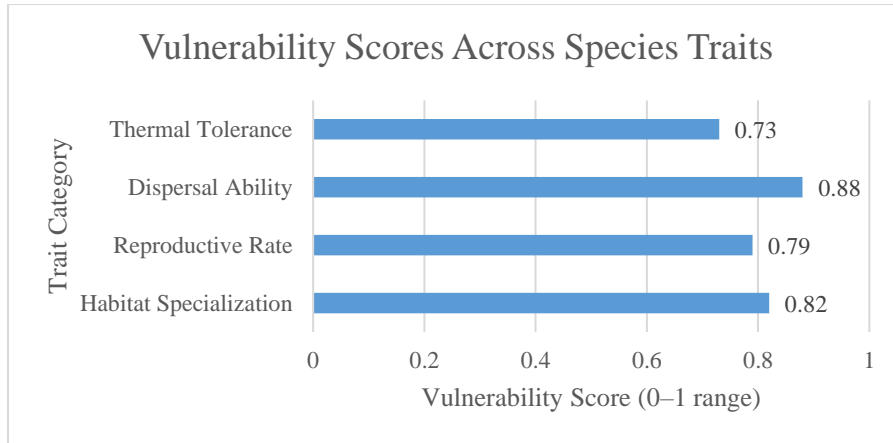


Figure 4: Vulnerability Scores Across Species Traits

Influence of Habitat Connectivity on Resilience

Habitat connectivity emerged as a critical indicator of species resilience. Populations residing in high-connectivity landscapes demonstrated increased survival probabilities, reduced extinction risk, and improved demographic stability compared to those in fragmented environments (Table 2). Connectivity made it easier for species to move to new habitats because of climate change,

helped them get back to their natural habitats, and improved genetic exchange. But broken-up landscapes were ecological traps, especially during extreme weather events like heat waves or long dry spells. Even species that could easily change how they acted saw their numbers drop when they couldn't move around. Interventions that enhance connectivity, such as reforestation corridors, riparian buffers, and wetland mosaics, significantly improved resilience projections in simulation models.

Table 2: Effects of Habitat Connectivity on Population Resilience

Connectivity Level	Mean Resilience Score (0–1 scale)	Extinction Probability (%)	Population Stability Rating
High Connectivity	0.82	8%	High stability, continuous gene flow
Medium Connectivity	0.63	17%	Moderate stability, partial dispersal barriers
Low Connectivity	0.41	33%	Low stability, isolated populations
Connectivity Level	Mean Resilience Score (0–1 scale)	Extinction Probability (%)	Population Stability Rating

This table compares projected species resilience under three levels of habitat connectivity using multi-scenario ecological simulations.

Table 2 and Figure 5 Compares resilience scores under high-, medium-, and low-connectivity ecosystems.)

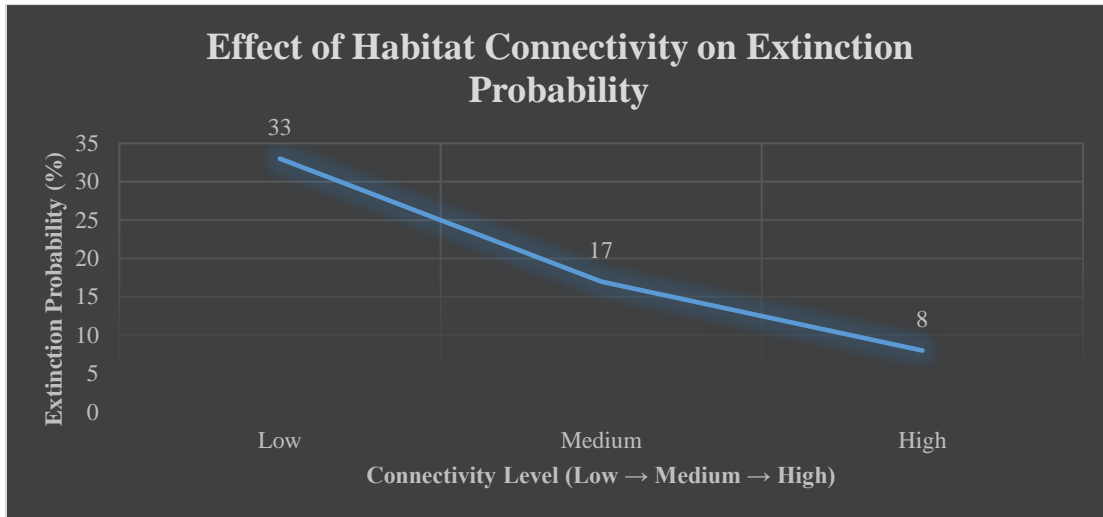


Figure 5: Effect of Habitat Connectivity on Extinction Probability

Population Responses Under Climate Stress Scenarios

Climate simulations showed that populations dropped significantly in all scenario classes, and the severity of the drop was directly related to the rise in temperature and the loss of habitat. In high-emission scenarios, thermally sensitive species experienced accelerated population declines due to physiological stress, diminished fertility, and elevated mortality rates. It was even harder to get to good thermal refugia in

fragmented landscapes, which made population losses even worse.

Medium-emissions scenarios caused moderate but significant drops, especially in montane and semi-arid areas. Even though low-emissions scenarios had better outcomes overall, specialist species were still at a lot of risk (Table 3). Adaptive behaviors, like choosing a microhabitat or changing the time of day to be active, helped a little but weren't enough for taxa that naturally have a narrow range of temperatures they can tolerate.

Table 3: Population Change Under Climate Scenarios

Scenario Type	Temperature Increase	Mean Population Change (%)	Resilience Level
Low Emissions (SSP1-2.6)	+1.2°C	-8%	Moderate resilience
Medium Emissions (SSP2-4.5)	+2.4°C	-18%	Low-Moderate resilience
High Emissions (SSP5-8.5)	+4.1°C	-33%	Low resilience

Table 3 represents Mean projected population changes under low-, medium-, and high-emissions climate scenarios modeled across 50

generations. It Shows mean population trends under three climate scenarios. Figure 6 illustrates comparative declines across emissions pathways.

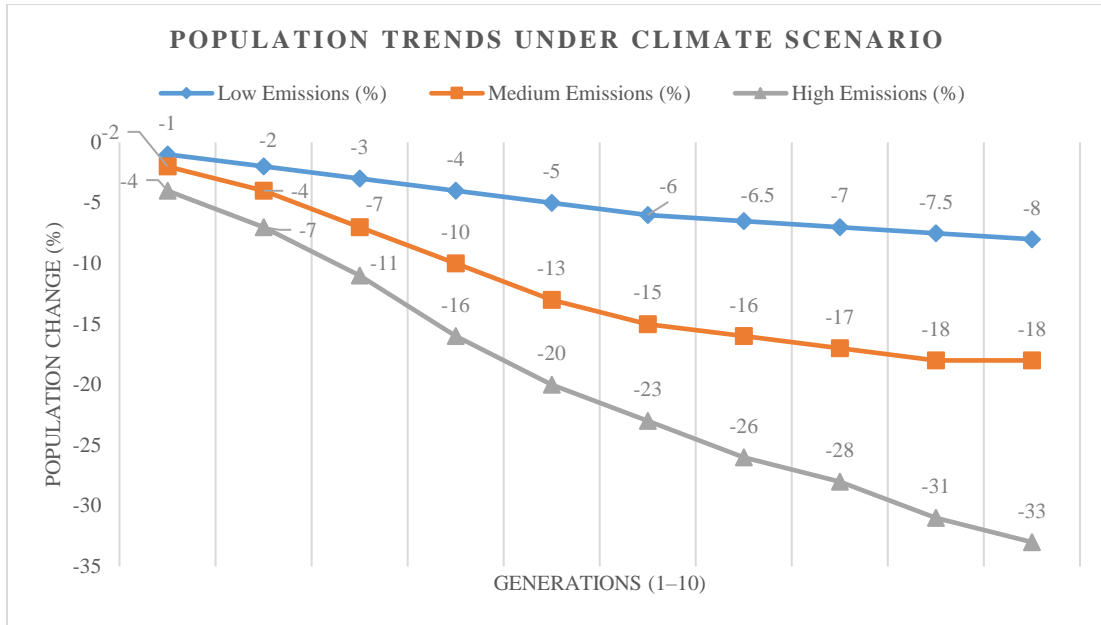


Figure 6: Population Trends Under Climate Scenarios

Behavioral and Ecological Adaptation Indicators

A number of changes in behavior have been shown to be strong signs of climate resilience, especially in birds and mammals. Birds that migrate can keep track of how resources change with the seasons by changing how they migrate, like when they leave or how long they stay at stops. When mammals were too hot, they ate a wider variety of foods and were more active at

night. Amphibians moved to shaded microhabitats, and reptiles changed how they basked to stay cool.

Ecological interactions also changed. For example, predator-prey relationships changed when prey species changed when they bred or how they moved. Keystone ecosystem engineers such as elephants and beavers modulated local hydrology and vegetation structure, indirectly buffering climate impacts for associated species (Table 4).

Table 4: Key Behavioral Adaptation Indicators Observed

Adaptive Behavior Type	Observation Frequency (Across 150 species)	Effect on Resilience	Species Examples
Range Shifts	112 species (High)	Strong positive	Mammals: foxes; Birds: warblers
Breeding Time Adjustment	78 species (Moderate)	Moderate positive	Amphibians: frogs; Birds: herons
Diet Flexibility	131 species (High)	Strong positive	Mammals: bears; Reptiles: monitor lizards
Migration Route Changes	54 species (Low-Moderate)	Moderate positive	Birds: cranes; Marine species: sea turtles

This table 4 reports how often major climate-related adaptive behaviors were observed, and

their associated effect strengths on species resilience.

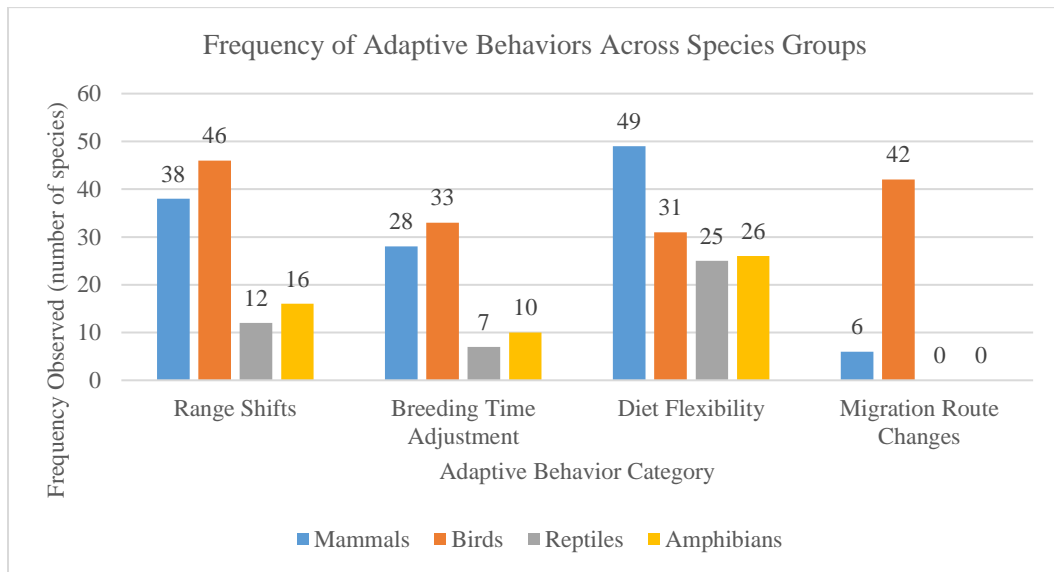


Figure 7: Frequency of Adaptive Behaviors Across Species Groups

Figure 7 Compares behavioral plasticity across mammals, birds, reptiles, and amphibians.

Spatial Patterns of Climate Resilience Across Landscapes

Spatial analysis revealed that resilience varied across different locations. For instance, the most vulnerable species lived in ecosystems that were high up, on the coast, or in the tropics. Areas with low resilience were linked to rapid climate change, few places to hide, and few ways to spread. Mosaic landscapes with wetlands, mixed forests, and riparian systems, on the other hand, were much more resilient.

Conclusion

This research illustrates that the resilience of wildlife populations to climate change is influenced by a complex interplay of species traits, behavioral adaptability, habitat characteristics, and ecological interactions. Species with broad ecological niches, high dispersal abilities, and flexible behavioral adaptations are better equipped to cope with

environmental stressors, whereas specialists and species with low reproductive rates display heightened susceptibility. Habitat quality and connectivity became important factors in resilience, which shows how important it is to manage landscapes along with species-specific conservation efforts.

Changes in migration and breeding patterns, as well as changes in foraging strategies, are all examples of behavioral and ecological adaptations that are important for keeping populations stable in the face of climate change. These findings demonstrate that animals actively influence their environments, potentially altering ecosystem dynamics in ways that can mitigate or exacerbate climate impacts. The study also shows that even species that can adapt their behavior may see big drops in their populations when the environment changes too much for them to handle.

From a conservation standpoint, the findings endorse proactive, climate-adaptive strategies that consider ecological, behavioral, and

evolutionary factors. To protect biodiversity, we need to link habitats, fix damaged landscapes, and make sure that protected areas will still be safe when the climate changes. It is also important to use a lot of different species and work together in fields like ecology, biology, environmental science, and wildlife management to make sure that conservation efforts work.

This study enhances global comprehension of the interdependence between species and their environments, while providing valuable guidance on fostering wildlife resilience. The study identifies vulnerable populations, clarifies adaptation mechanisms, and underscores the significance of ecosystem-level planning, thereby directing evidence-based strategies for alleviating the effects of climate change. We need to know how different species react to changes in a world that is changing quickly, and we need to be committed to protecting the ecological networks that support life across landscapes.

References

- [1] Bagne, Karen E., Megan M. Friggens, and Deborah M. Finch. "A system for assessing vulnerability of species (SAVS) to climate change." *Gen. Tech. Rep. RMRS-GTR-257. Fort Collins, CO: US Department of Agriculture, Forest Service, Rocky Mountain Research Station. 28 p. 257* (2011).
<https://doi.org/10.2737/RMRS-GTR-257>
- [2] Carroll, Carlos, Jeffrey R. Dunk, and Atte Moilanen. "Optimizing resiliency of reserve networks to climate change: multispecies conservation planning in the Pacific Northwest, USA." *Global Change Biology* 16, no. 3 (2010): 891-904.
<https://doi.org/10.1111/j.1365-2486.2009.01965.x>
- [3] Catano, Christopher P., Stephanie S. Romañach, James M. Beerens, Leonard G. Pearlstine, Laura A. Brandt, Kristen M. Hart, Frank J. Mazzotti, and Joel C. Trexler. "Using scenario planning to evaluate the impacts of climate change on wildlife populations and communities in the Florida Everglades." *Environmental Management* 55, no. 4 (2015): 807-823.
<https://doi.org/10.1007/s00267-014-0397-5>
- [4] Chariyev, K., V. Sapaye, H. M. Mahdi, M. Tripathi, I. Toshmatov, and A. Soy. "Integrated remote sensing and GIS approach for mapping coral reef health in response to climate change." *International Journal of Aquatic Research and Environmental Studies* 5, no. 1 (2025): 110–121.
<https://doi.org/10.70102/IJARES/V5S1/5-S1-12>
- [5] Fatima, Tahzeeb, and Muhammad Irshad. "The impact of climate change on wildlife conservation: challenges and strategies." *Journal of Medical & Health Sciences Review* 2, no. 1 (2025).
- [6] Forrest, Jessica L., Eric Wikramanayake, Rinjan Shrestha, Gopala Areendran, Kinley Gyeltshen, Aishwarya Maheshwari, Sraboni Mazumdar, Robin Naidoo, Gokarna Jung Thapa, and Kamal Thapa. "Conservation and climate change: Assessing the vulnerability of snow

- leopard habitat to treeline shift in the Himalaya." *Biological Conservation* 150, no. 1 (2012): 129-135.
<https://doi.org/10.1016/j.biocon.2012.03.001>
- [7] Gardali, Thomas, Nathaniel E. Seavy, Ryan T. DiGaudio, and Lyann A. Comrack. "A climate change vulnerability assessment of California's at-risk birds." *PLoS One* 7, no. 3 (2012): e29507.
<https://doi.org/10.1371/journal.pone.0029507>
- [8] Gayo, Leopody. "A review of climate change, human population growth and poverty as potential drivers of human wildlife conflicts in Africa." *Discover Animals* 2, no. 1 (2025): 49.
- [9] Gillson, Lindsey, Terence P. Dawson, Sam Jack, and Melodie A. McGeoch. "Accommodating climate change contingencies in conservation strategy." *Trends in Ecology & Evolution* 28, no. 3 (2013): 135-142.
<https://doi.org/10.1016/j.tree.2012.10.008>
- [10] Johnston, Alison, Malcolm Ausden, Andrew M. Dodd, Richard B. Bradbury, Dan E. Chamberlain, Frédéric Jiguet, Chris D. Thomas et al. "Observed and predicted effects of climate change on species abundance in protected areas." *Nature Climate Change* 3, no. 12 (2013): 1055-1061.
- [11] Lawler, Joshua J. "Climate change adaptation strategies for resource management and conservation planning." *Annals of the New York Academy of Sciences* 1162, no. 1 (2009): 79-98.
<https://doi.org/10.1111/j.1749-6632.2009.04147.x>
- [12] LEDee, Olivia E., Stephen D. Handler, Christopher L. Hoving, Christopher W. Swanston, and Benjamin Zuckerberg. "Preparing wildlife for climate change: How far have we come?." *The Journal of Wildlife Management* 85, no. 1 (2021): 7-16.
<https://doi.org/10.1002/jwmg.21969>
- [13] Markham, Adam, and Jay Malcolm. "Biodiversity and wildlife: adaptation to climate change." In *Adapting to Climate Change: An International Perspective*, pp. 384-401. New York, NY: Springer New York, 1996.
- [14] Mawdsley, Jonathan R., Robin O'malley, and Dennis S. Ojima. "A review of climate-change adaptation strategies for wildlife management and biodiversity conservation." *Conservation Biology* 23, no. 5 (2009): 1080-1089.
<https://doi.org/10.1111/j.1523-1739.2009.01264.x>
- [15] Mawdsley, Jonathan. "Design of conservation strategies for climate adaptation." *Wiley Interdisciplinary Reviews: Climate Change* 2, no. 4 (2011): 498-515.
<https://doi.org/10.1002/wcc.127>
- [16] Mohanty, S., S. Sahoo, S. Dhal, and S. C. Swain. "Expanding LGBTQ+ Inclusivity: An Ecological Model of School Library Practice in Addition to Collection Development." *Indian Journal of Information Sources and Services* 14, no. 3 (2024): 169-174.
<https://doi.org/10.51983/ijiss-2024.14.3.22>

- [17] Nicotra, Adrienne B., Erik A. Beever, Amanda L. Robertson, Gretchen E. Hofmann, and John O'Leary. "Assessing the components of adaptive capacity to improve conservation and management efforts under global change." *Conservation Biology* 29, no. 5 (2015): 1268-1278.
<https://doi.org/10.1111/cobi.12522>
- [18] Parashina, John. "Analysis of Climate Resilience Among the Livestock Dependent Community at Satao Elerai Community Wildlife Conservancy, Kajiado County, Kenya." PhD diss., University of Nairobi, 2019.
- [19] Perry, Denielle, Sarah Praskievicz, Ryan McManamay, Alark Saxena, Kerry Grimm, Nicolas Zegre, Lucas Bair, Benjamin L. Ruddell, and Richard Rushforth. "Resilient riverine social–ecological systems: a new paradigm to meet global conservation targets." *Wiley Interdisciplinary Reviews: Water* 11, no. 6 (2024): e1753.
<https://doi.org/10.1002/wat2.1753>
- [20] Prato, Tony. "Evaluating and managing wildlife impacts of climate change under uncertainty." *Ecological Modelling* 220, no. 7 (2009): 923-930.
<https://doi.org/10.1016/j.ecolmodel.2009.01.010>
- [21] Sharipov, Shavkat, Mirkomil Gudalov, Ozodbek Nematov, Gofur Tovbaev, Nurmukhamad Kasimov, Aziza Mirzaeva, and Khusniddin Khazratqulov. "Effects and Consequences of Climate Change on the Natural Conditions of Mirzachol District." *Natural and Engineering Sciences* 9, no. 2 (2024): 257-269.
<https://doi.org/10.28978/nesciences.1574448>
- [22] West, Jordan M., Susan H. Julius, Peter Kareiva, Carolyn Enquist, Joshua J. Lawler, Brian Petersen, Ayana E. Johnson, and M. Rebecca Shaw. "US natural resources and climate change: concepts and approaches for management adaptation." *Environmental management* 44, no. 6 (2009): 1001-1021